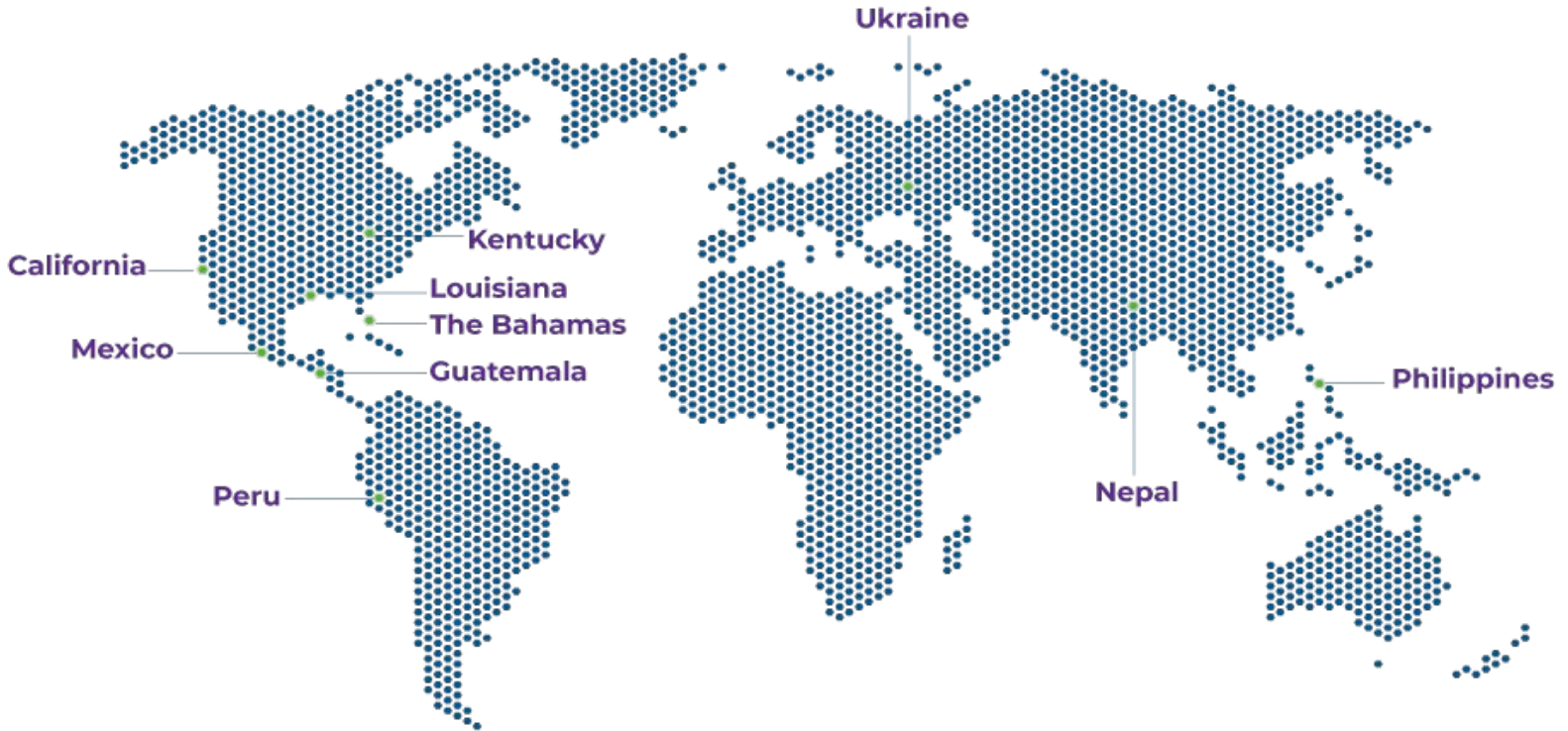


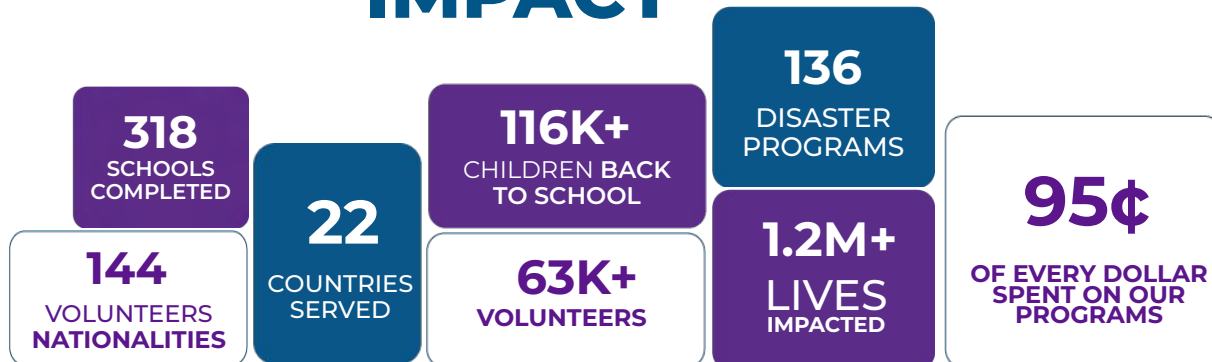


This Quarter at a Glance



We have earned a 4-star rating by Charity Navigator for the eighth year in a row. This year only six percent of rated nonprofits received this distinction for financial and operational efficiency.

OUR TOTAL IMPACT



FEMALE EMPOWERMENT

Gender equality is a basic human right, but it is also crucial to achieving prosperous societies and sustainable development. Yet, in all parts of the world, women and girls are facing threats to their lives, health and wellbeing.

The ripple effects of a disaster can often compound these inequalities, with women and girls being the most vulnerable.

NEPAL Relief

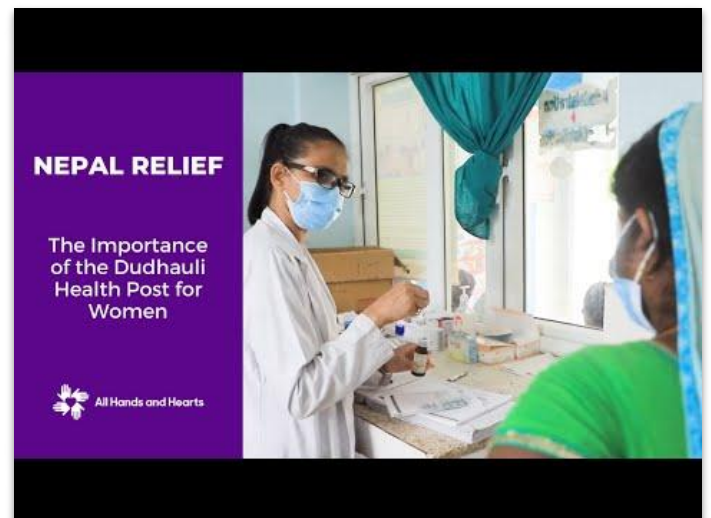
In **Nepal**, the expansion Dudhauri health post is nearing completion. **Our work involves constructing a birthing center, providing maternal care and sexual and reproductive health services.** Take a look at the video on the right for further information on our work in Dudhauri. In addition, we are excited to announce a new community led project constructing accessible water, sanitation and hygiene (WASH) infrastructure at the local Kamala Multicampus college. **We are proud to continue our Female Mason Training in Sindhuli and are honored to share Indra's story, one of our female masons working at the health post.**

We are thrilled to share that **all donations until June 26th will be matched dollar for dollar up to \$50K thanks to the generosity of our Board and the AHAH UK Trust.** Your donation will help make access to safe and reliable healthcare a reality for the communities surrounding Dudhauri health post.

Donate Now and Double Your Impact



At All Hands and Hearts (AHAH), we identify and celebrate the crucial role women play in building back and lifting up their community in the wake of disaster. Working with local leaders, individuals and partners, we identify unique ways to empower women and girls to accelerate progress towards gender equality and thriving communities.



PHILIPPINES Typhoon Relief

We are proud to announce our **Philippines Typhoon Relief** program began at the end of **March and is being run by a fully female Filipina team.** This four month program will support the communities of Araceli to restore livelihoods through the repair and rebuilding of fishing boats or 'bangkas'. Utilizing the Filipino "bayanihan" model of community members working together, this unique program aims to repair over 60 'bangkas' upon completion and, with work underway on 16 fishing boats so far, we are on track to achieve this goal.

GUATEMALA

Hurricane Relief

In **Guatemala**, we are working to bring comprehensive water and sanitation infrastructure and hygiene (WASH) training, in partnership with ADRI, to the region's six most vulnerable schools. **We are delighted to announce that we have completed construction at three of the six schools: Nuevo Eden, Monja Blanca and El Manantial, impacting 170 students.** Through our partnership with the Guatemalan chapter of PERIOD., **we have conducted a training program with 250 adults and 260 children, providing education on menstrual hygiene and dispelling the entrenched social stigmas around menstruation.**



COMMUNITY

ENGAGEMENT

Community is pivotal following the devastation of a disaster. Every step of the way, from program conception to execution, we listen to and learn from the communities we're working alongside. From hiring designated staff members responsible for community engagement, liaising and integrating, to partnering with local organizations, we are guided by the community to rebuild in stronger, more resilient ways.



MEXICO

Earthquake Relief

We're delighted to announce the completion of the Guillermo Prieto primary school, our 21st school rebuild in Mexico, impacting more than 75 students on a daily basis.

Local community members regularly joined us in the rebuilding efforts of the school. Through the local tradition of 'tequios', a practice of serving one's community, we were able to complete a safe school while working alongside the communities we serve.

Our sixth program in Mexico began in mid-May, working to rebuild the Cri Cri kindergarten, which has been lacking safe classrooms since the 2017 earthquakes. Our team is rebuilding the four classrooms of Cri Cri, as well as restoring access to 100% of the school's water and sanitation facilities, providing a safe, disaster-resilient school.

KENTUCKY Tornado Relief

To assist in determining the long-term needs of those affected by the spate of violent tornadoes, we are connecting with organizations and community leaders in **Kentucky**. Through these connections we aim to embed ourselves in the impacted communities and identify an inclusive and participatory approach to supporting their long-term needs.

THE BAHAMAS Hurricane Relief

After two and a half years on Great Abaco in The Bahamas, our work supporting those impacted by the devastating effects of Hurricane Dorian has come to a close.

In addition to clearing hurricane wreckage and installing roofs on homes, we have supported the reconstruction of eight school campuses, impacting 1,300 students. The immense support from The TK Foundation enabled us to remain in the community until April 2022, where we were able to support an additional 19 households. Read more about our work in The Bahamas [here](#).

PERU Earthquake Relief

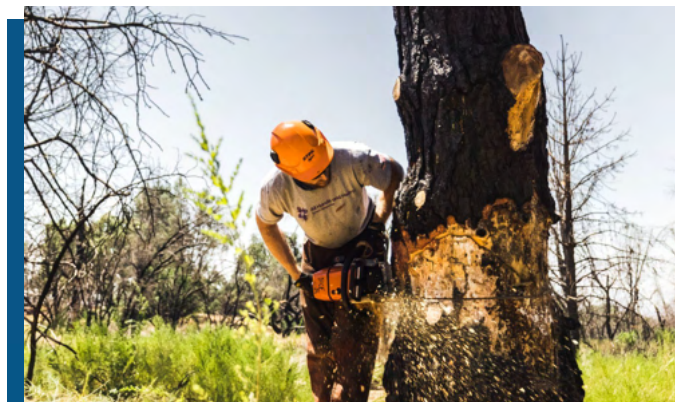
All Hands and Hearts is in the final stage of completing the Santa Cruz de Villacuri Preschool, in **Peru**. We are excited for over 200 students in the community to start their educational journeys in the most comfortable and safest of settings.

UKRAINE Relief

Due to the violent invasion of Ukraine, All Hands and Hearts deployed a team to Poland at the beginning of March. **Thanks to the generosity of all our supporters, donors and partners we have been working closely with valued local partners to offer our unique skills in this crisis.** Read our [latest update](#) for more information.

MITIGATION AND WHAT IT MEANS FOR OUR PROGRAMS IN THE U.S.

Mitigation is the action of reducing the severity, seriousness or painfulness of something. All Hands and Hearts responds when disaster strikes and we stay to help communities fortify their resilience to potential future disasters. For several of our initiatives, this resilience focus comes in the form of mitigation.



LOUISIANA Hurricane Relief

In **Louisiana**, our work continues alongside communities impacted by Hurricane Ida and in acknowledgment of the importance of mitigation, we are expanding our scope of work. **We are collaborating with local conservation partners engaging in Disaster Risk Reduction (DRR) activities**, including fortifying the environment, oyster shell reclamation, restoring natural defenses, and providing education to communities on how to prepare their homes to be more resilient for future disasters.



CALIFORNIA Wildfire Relief

In **California**, we are broadening our year-round wildfire relief program both geographically and in terms of scope of work, expanding our regions to additional communities in Butte County.

Through the guidance of community leaders and the Butte Fire Safe Council in California, our staff and volunteers are executing chainsaw work in Berry Creek. This allows us to accomplish tasks such as removing hazardous trees that may fall on structures or people, creating defensible space by removing fuels around areas where people plan to rebuild, piling up the organic debris to be removed by Butte Fire Safe and widening a section of road that provides critical wildfire evacuation routes to rural communities in the area. **Read more about our mitigation work for our programs here.**

WAYS TO GET INVOLVED

Annapurna Base Camp Trek 2022

You have until **June 30th to register** to be part of an adventure of a lifetime! Join us in **October 2022**, as we trek to Annapurna Base Camp to support our Nepal programs. **Register** before the end of June to join as a trek participant and make a difference.

Donate today

Help us to continue making an impact in the world. Did you know you can now donate through **Venmo**?

Become a Builder

The Builders are a passionate group of givers who have committed to financially supporting our work every month. **By becoming a Builder, you are helping to bring hope and assistance to disaster-affected communities** in need by ensuring we can “arrive early and stay late”.

Cryptocurrency

Donating cryptocurrency can be one of the most tax-efficient ways to support our work and could save you money. **Learn more here.**

Volunteer with us

One of the best ways to support our work is by **joining us on program!**